

SELF BUILD & DESIGN

www.selfbuildanddesign.com



Open-plan living

ADDING A LIGHT-FILLED, MODERN EXTENSION

PLUS
INSPIRING
GLAZING
PROJECTS

Managing your build
Do you have what it takes?

THE £50,000 CONVERSION
From factory to family home

STONE FLOORING
Ideas and advice

DEALING WITH A BANKRUPT BUILDER



Reggie Yates'
London mews renovation

PLUS GET FREE ACCESS TO OUR ONLINE PLOTS DATABASE



INTERIOR DESIGN

URBAN OASIS

Interior designers Keir Townsend have created a city retreat in a high-rise flat, making the most of its Chelsea and Kensington views.

MEET THE DESIGNER

Interior Design Studio **Keir Townsend** provides a full scope of services from concept design and branding through to design implementation. Though relatively new as an interior design partnership, Irina Townsend (right) and Alastair Keir have already amassed a prestigious portfolio of residential and commercial work. Their projects are at the forefront of high-end interiors, providing a hand-picked selection of exclusive furniture, flooring and lighting sourced from all over the world. Most of the pieces are bespoke and many are made to Keir Townsend's own designs. (keirtownsend.com)



Initially completed 13 years ago, the high-rise 120 sq m flat on two levels was ready for some attention when City professional Benjamin White bought the property. He wanted to create the perfect urban oasis to complement his busy lifestyle, with a focus on entertaining space, as well as a comfortable guest room for visiting friends and family.

In addition to the general interior redesign, Keir Townsend made some alterations to the layout, removing the partition wall between the kitchen and living room to open up the space and bring in a contemporary design.

The south-facing living room, now open plan to the kitchen/dining area, has glazed sliding doors opening onto the balcony with views of west London. Because of the abundance of natural light, the designers were able to use rich, dark tones alongside mood lighting, all centred around the large amethyst cluster first seen by Benjamin in the Keir Townsend showroom.

The bespoke dining table is made using several slabs of granite threaded with iron pyrite, or fool's gold as it is commonly known. The same stone has been used for the worktops and splashbacks, effectively linking the kitchen and dining areas in the open-plan space.

The principal bedroom uses browns and greys with velvet to create a high-end finish. "The trick to using colour confidently in a relatively small space is not to have too many contrasts or palette juxtapositions," says Irina Townsend. "There should be an overall

PICTURES: Columns in the kitchen/diner are clad in antiqued bronze mirrors and bronzed diffuser glass 'chandelier' pick up the golden streaks in the granite while dimmers create mood lighting for the dining area.



The crystal mixer taps in the bathroom are carved into shapes of seahorses.

dominant background colour scheme and if different materials and textures from the same palette are used it adds a calming and luxurious feel.”

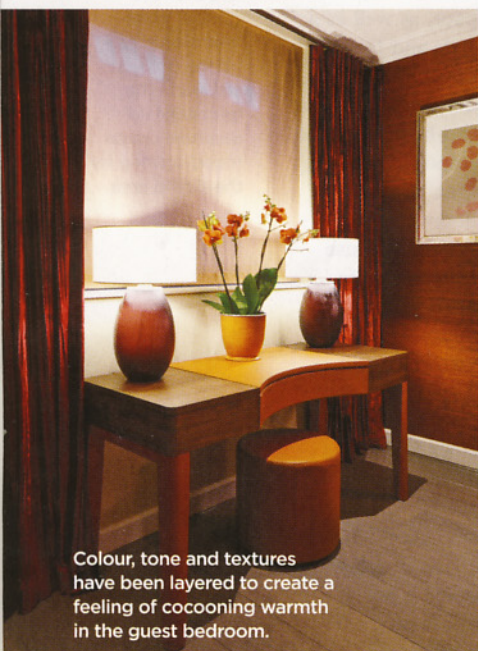
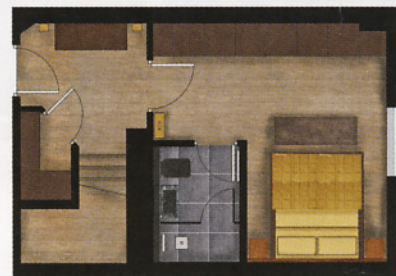
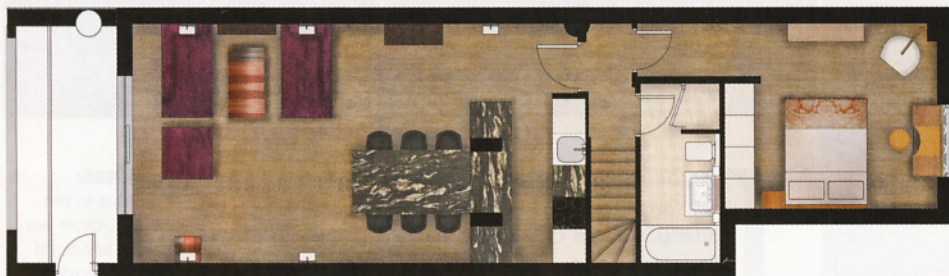
The principal en suite bathroom features a bespoke graphite-colour sink in recycled glass lit from within with LED lighting fitted with chrome and black onyx taps above a black lacquered vanity unit.

“Dark tones make a space look smaller and lighter tones make it look bigger,” explains Irina. “However, reflective dark surfaces with a variation of tone create a sense of depth. Well-thought-out dark schemes can feel more spacious than pale schemes. Black schemes work better in electric light so a bathroom with no natural light can be dramatic.”

The wall behind the wash basin is clad with bespoke carved wooden panels with Art Decor detail. Textured grey/black mosaic tiles in the shower complement the grey silver floor tiles. Most of the joinery in the guest bedroom was made for Keir Townsend. The pendant and desk lights are hand-blown Murano glass, lighting up the textured straw wallpaper which contrasts with the smooth finish of the bedside tables.

One of the only neutral rooms in the house, the bathroom combines subtle shades in a variety of textures. The main feature is a bespoke lacquered vanity unit with chrome detailing. IP-rated glass wall lights with leather and chrome can be dimmed to create different moods.

“Black schemes work better in electric light so a bathroom with no natural light can be dramatic.”



Colour, tone and textures have been layered to create a feeling of cocooning warmth in the guest bedroom.





Bookcases and shelving in the living area are made of dark burnt oak.



The principal bedroom uses wall light shades and bespoke cushions in bronze tones add colour.



The dark tones of the en suite work with the lack of natural light.

