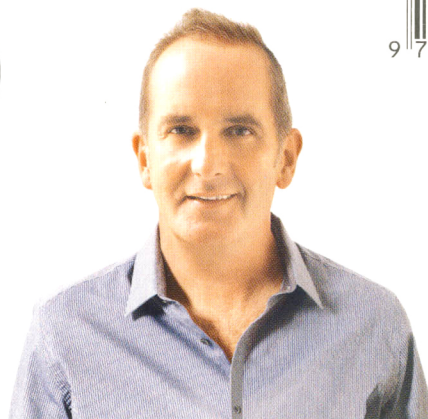


GRAND DESIGNS

The official magazine of the hit TV series



£3.99
August 2013

Splashproof design
This swivel panel screen from Merlyn is a great idea if you want an open enclosure but don't want to soak the bathroom floor every time you shower. You can rotate it to deflect spray back into the tray – shown here with Merlyn's 8 Series walk-in enclosure, which comes in various sizes and costs from £1,398. The swivel panel measures H201.5x W30cm, £178. (+353 5 6779 1555; merlynshowering.com)

BATHROOMS
The latest inspiring designs on tap *Words Lisa Burn*



HOT STUFF

For a hit of colour, check out Bisque's new pretty pastel range of radiators. Shown (from left) in ice, lemon, mint and steel, plus rose and mauve. You can also colour-match to co-ordinate with your interior – choose from more than 2,000 hues. The Classic (pictured) starts from H37.5xW49xD13.6cm, £440. (01276 605 888; bisque.co.uk)

SHOP TALK

German company Keramag Design has opened its first UK showroom at Chelsea Harbour in London. View by appointment. Fairbanks Studio 2, 65-69 Lots Road, SW10. (07753 828 647; keramagdesign.com)

ECO ELEGANCE

GDM loves this new jewel-like surface made from recycled glass from Keir Townsend. Available as slabs, it can be cut to any size (up to H300xW125cm) to adapt to your room. Pictured (from top) in tiramasu, emerald and aqua, priced from £660 per sqm. (020 7746 2442; keirtownsend.com)

It's a trend

Art-Deco sinks

Twenties glamour is having a moment across all homeware, with luxurious shapes and chrome detailing taking centre-stage. For a heritage feel, opt for Catchpole & Rye's Kinross design (inset) with black and gold Portoro marble. H80xW90xD70cm, £4,752. (01233 840 840; catchpoleandrye.com). Devon & Devon's Wide Blues sink (below) takes a modern approach, combining a sleek ceramic block with a geometric grill and pyramid legs. H86.5xW124.5xD56.5cm, £3,350. (020 7221 5137; devon-devon.com)

